

Venus Alchemy Presents Venus Evening Star Phase

With Cayelin K Castell and Tami Brunk



Break Out Groups

If you did the **Venus Underworld Life Review** what were some insights, aha's, questions, patterns that showed up that you can share with your group?

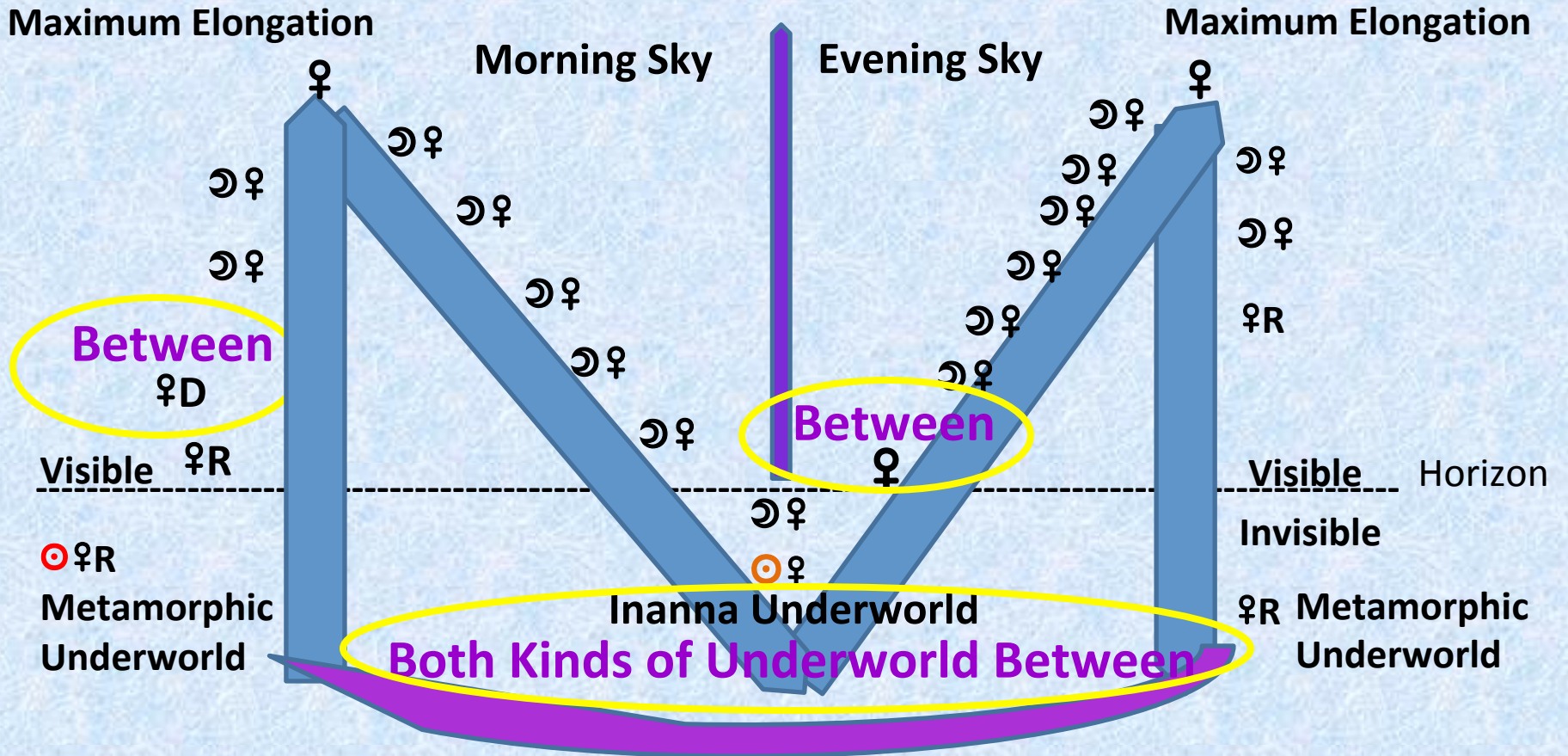
OR

If you didn't do the Underworld Life Review then what has been your experience in this Venus Underworld so far that began November 28 and lasts until February 19?

OR

How has the eclipse activated your heart knowing?

Venus Phases



There are four different Expressions of Between

Morning Star Between: 1 day to a month from Station Direct to 1st Moon Conjunction

Evening Star Between: 1 day to a month from Evening Rise to 1st Moon Conjunction

Inanna Underworld Between: 60 to 90 Days

Metamorphic Underworld Between: 8 days

Name	Between Phase
Amy	Evening Star confirmed
Ariana	Evening Star confirmed
Jennifer Barr	Evening Star
Jennifer Ramsdell	Evening Star
Mary	Evening Star
Laura	Morning Star
Diane	Morning Star
Sharon	Morning Star
Maria	Underworld
Tara	Underworld
Jantien	Underworld
MJ (Martha)	Metamorphic Underworld

**Between Phase
Before a Chakra Gate
Or in one of the Underworlds**

Venus Between

If you are born in an Underworld Phase or before the First Chakra Gate in Either the Morning or Evening Sky you are in a Unique Between Place.

The Between Phases

Between something ending and beginning but not at the ending or beginning

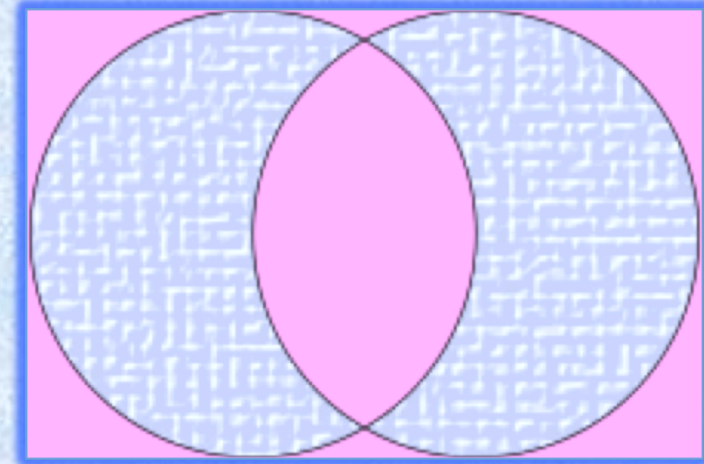
- **Morning Sky Between** occurs after Station Direct to First Moon Conjunction
- **Evening Sky Between** Inanna Rising from Underworld to First Moon Conjunction

Between Defined in *On Becoming An Alchemist*

by Catherine MacCoun

- Experiencing what is Subtle
- Rare Potential exists here
- Ready for the Descent, Underworld or Ascent
- Not a Mid-Point, Not Here or There, rather Between Here and There
- Can be felt as Obscurity, Ambiguous, Something difficult to Understand or is Imperfectly Understood, an Unknown

Between is a place that is Obscure or Unclear, Ambiguous, Uncertain, Not easy to Understand, Not This – Not That, Where New Possibilities may emerge



Venus Between

Challenges/Shadow

- You May Feel like an Outsider
- You May Never “Fit In”
- You May Always Feel “in the Middle”
- You Might Feel Torn or Split Between aspects of Self or Self and Other
- You Might Have the Experience of Being Neither Here nor There. “Where am I? Who am I?”
- You might find it difficult to explain yourself or your experience (its obscure to others and unexplainable)
- You May Struggle with Gray Areas - Never Feeling able to Come to a Clear Yes or No
- You May Have An Addiction to Not Choosing



Venus Between

Gifts Include Being:

- A Bridge Person, a Connector
- Adaptable - Navigating Many Different Realities
- Unique, Different from the Norm - Out of the Box Solutions
- *Drawing Between the Lines*
- Not Defined by Others, rather Creating your Own Reality
- Access to Multiple Perspectives and States of Being



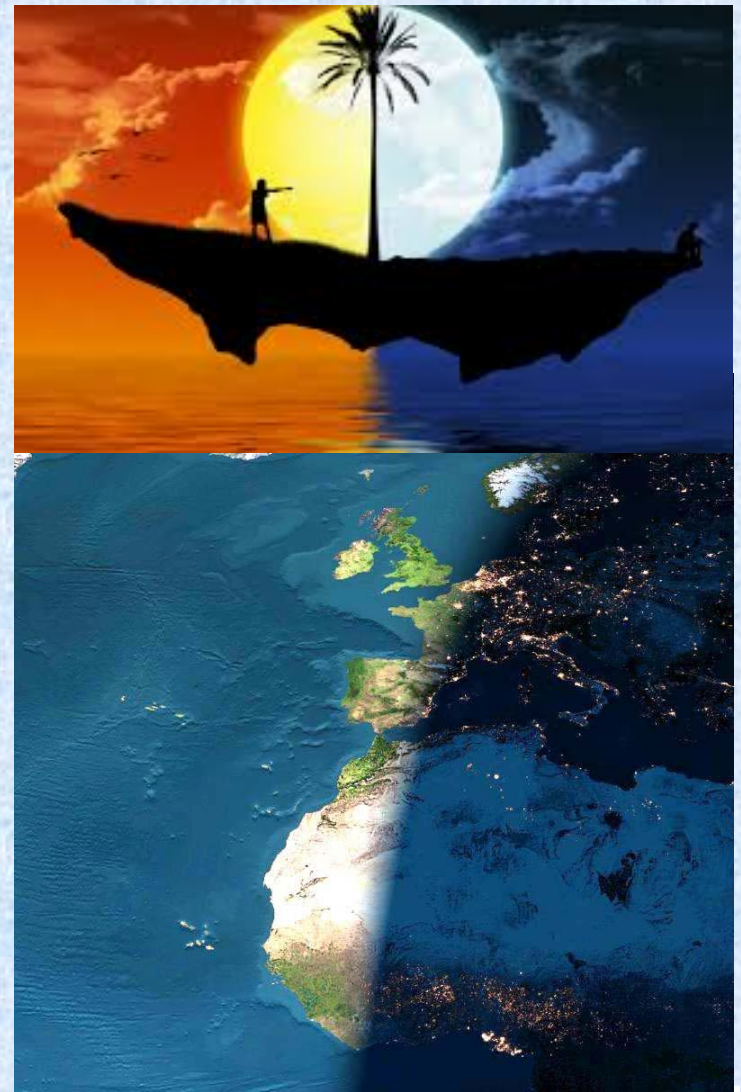
Between Questions

Morning Star: How can I fully embrace and Celebrate the Uniqueness of my Path?

Inanna Underworld: Where do I feel I stuck between the gifts of living and dying? What would it take to heal this divide?

Evening Star: What would it take for me to Celebrate my Gifts as a Bridge and Connector?

Metamorphic Underworld: What would it take for me to claim my ability to hold multiple perspectives and states of being simultaneously?



DARE TO BE DIFFERENT



Charge of the Evening Star Goddess

I who am the beauty of the Green Earth,
The White Moon among the Stars,
and the Mysteries of the Waters.
I call upon your Soul to Arise and Come
Unto Me.

For I am the Soul of Nature
Giving Life to the Universe.
From me all things Proceed and
unto me they must Return.

Let my worship be in the heart
that rejoices, for behold - all acts of
Love and Pleasure are my Rituals.

Let there be Beauty and Strength, Power
and Compassion, Honor and Humility,
Mirth and Reverence within you.



And you who seek to know me,
know that your seeking
and yearning will avail you not
unless you know the Mystery:

For if what you Seek,
you find not within yourself,
you will never find it without.

For behold, I have been with you from the
beginning and I am what is attained at the
end of desire.

Name	Venus Sign
Amy	Aries
Ariana	Aries
Cayelin	Aries
Jacqueline	Aries
Jennifer Barr	Aries
Lara	Aries
Linda Lomker	Leo
Viola	Leo
Regina	Sagittarius

Evening Star Venus

**Add Earth to the Sign
Venus is in.**

Lyn Goldberg	Cancer
Aida	Gemini
Dana	Gemini
Kimie	Aquarius
Stella	Libra
Jennifer Ramsdell	Libra
Linda McCallum	Taurus
Mary Davey	Virgo

**17 out of 37 class participants
Are Evening Star Phase
About 46%**



THE ELEMENTS

Earth – Yin Feminine

Evening Star

Maturity

Wisdom

Life as Sacred

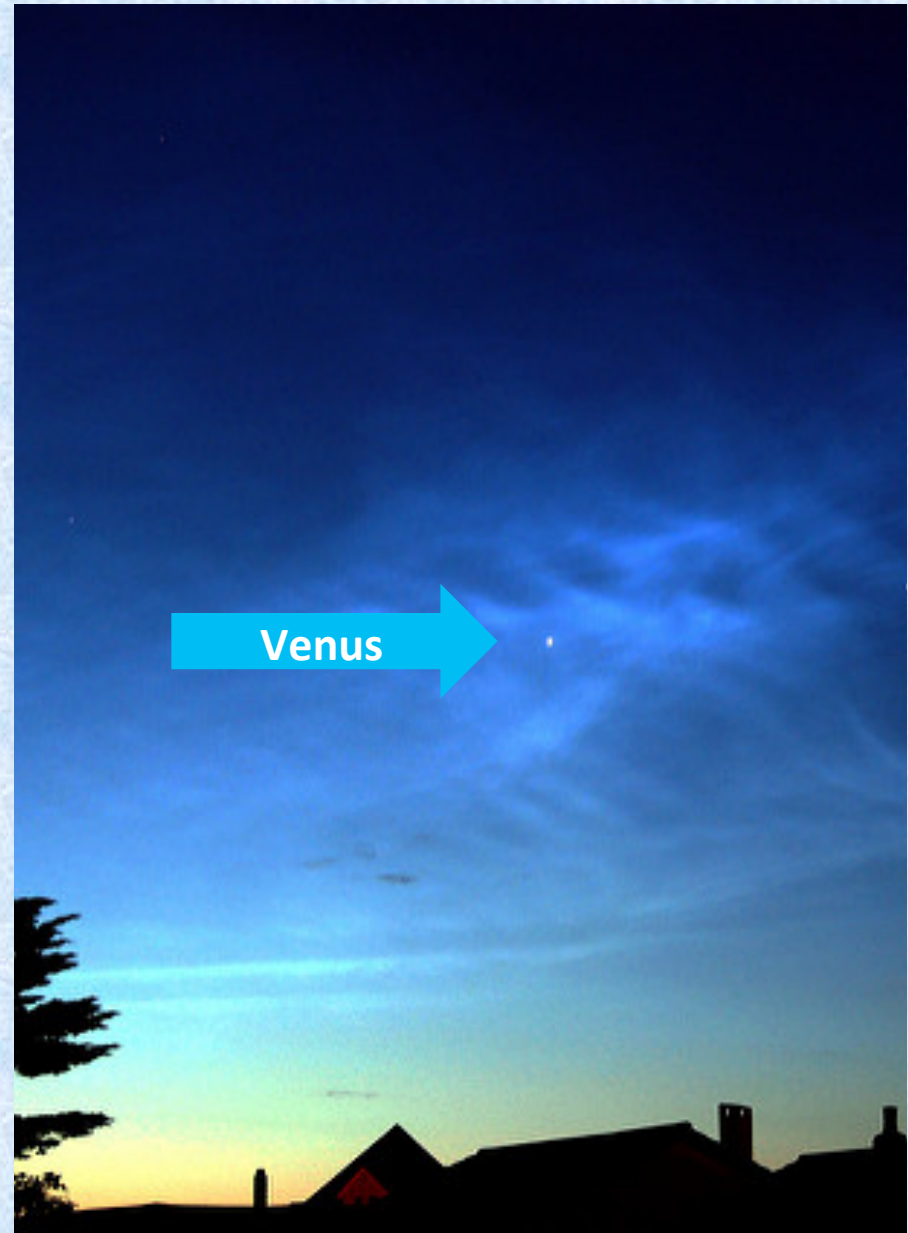
Evening Star Phase

Appears on the western horizon after sunset. As night progresses Venus slowly sets in the west.

First appearance is dim and grows in radiance to maximum brightness as Venus ascends.

The stars surrounding Venus in the evening sky are her people illuminated with the divine light of the Goddess.

Is the resurrection of divine life force, gained through the experience of wisdom and healthy self-love.

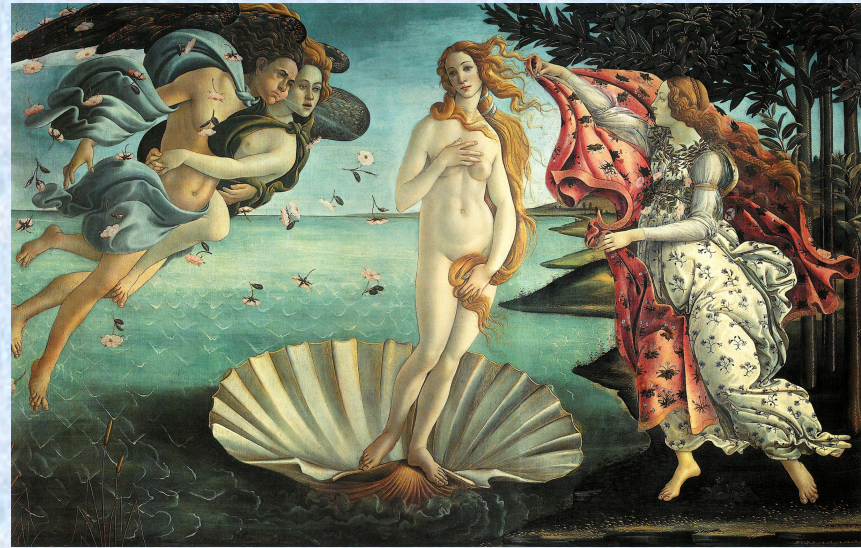


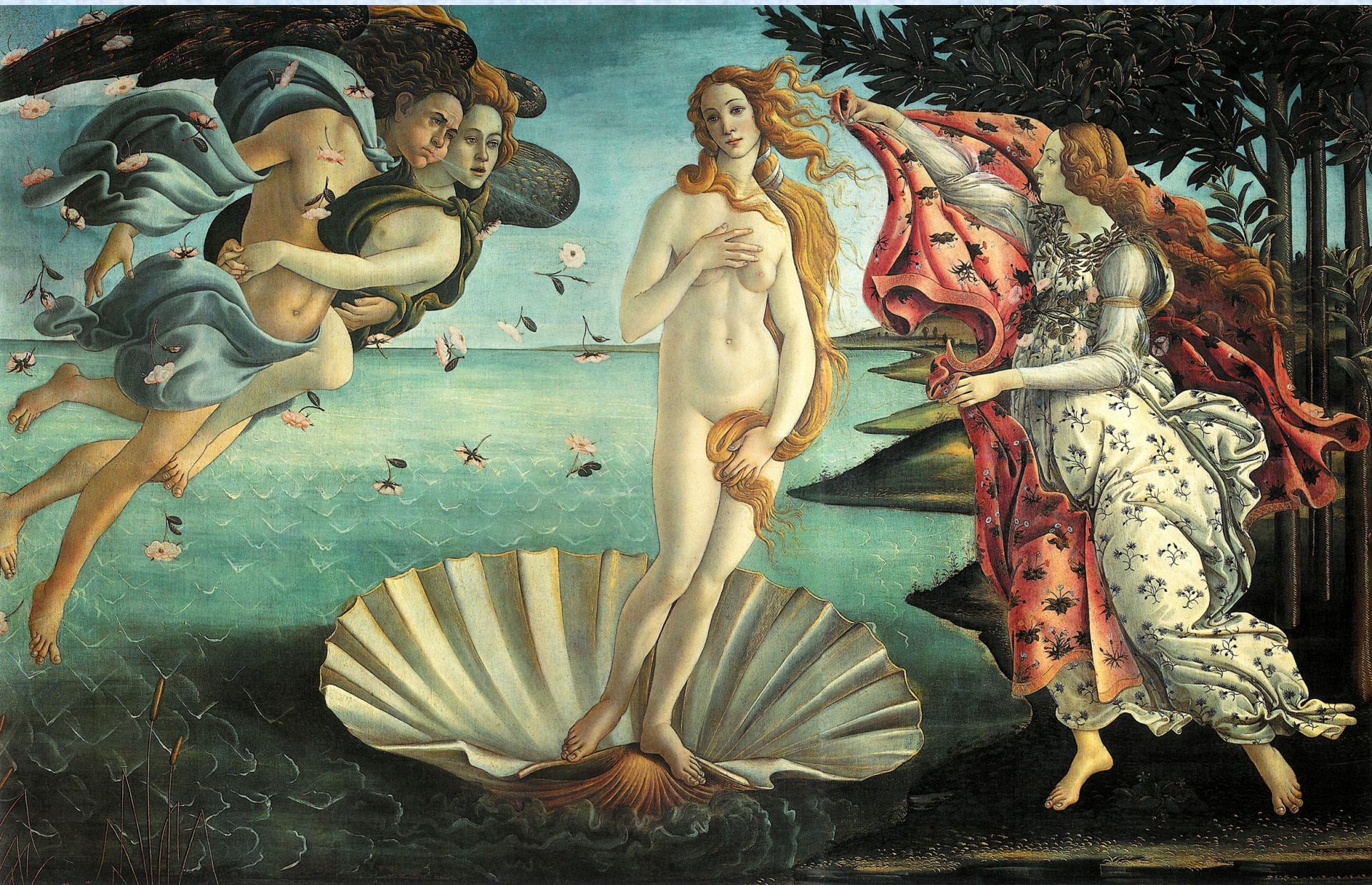
Evening Star Venus a.k.a. Jewel of the Sky

Egyptians Isis, Morning Star Sekhmet
transforms to Evening Star Hathor
Goddess of Love and Beauty

Greeks Hesperus, Aphrodite also
Goddess of Love and Beauty

Maya [Lamat](#) known as the Love Star
synonymous with inner Love.
Self-Love nurtured from within, grows and
radiates into the world; powerfully touching
and transforming every aspect of life.





**Aphrodite/Venus Rising into the Evening Sky
with her Royal Red Robe being returned to her**

Evening Star Phase

Sumerians and Babylonians saw evening Star Inanna as the fully initiated Priestess and Queen of Heaven.

Ute Shamans view Evening Star Venus as Uncle, bringer of gifts.

William Blake viewed Evening Star Venus as Wolf

Also viewed as:

- Alchemical High Priestess
- Sophia (Wise) Feminine including Saraswati, Minerva, Brigid
- All Love Goddesses including Lakshmi, Freya, Oshun



Evening Star Phase Intent

Add Earth The Physical Realm

Virgo Priestess

Capricorn Wise One

Taurus Love Goddess

- Integration and Synthesis, of the wisdom gained from the Underworld Initiation
- To be of Practical Sacred Service
- To strengthen and cultivate embodied love
- To embody the Sacred
- To be a Wisdom Resource
- To urge and invite others to embrace their own initiatory journey
- To Ascend

Venus is so transformed by her experience - she knows it is a gift for others to also choose this initiation and encourages them to do so. The Inanna Story describes the Daemons returning with Inanna - forcing her to choose someone to take her place.



The daemons returning with Inanna on her Ascent help facilitate connection with:

- Personal Genius
- Creativity
- Brilliance
- Creatorship
- Diving Deeper into your own Wisdom and Inner Knowing
- Supporting others in their own deep dive into the underworld initiation



NOTE: Daemons are defined as divine or supernatural beings expressing somewhere between gods and humans, representing an inspiring force, attendant and tutelary spirit. [More about Daemons](#)

Evening Star Phase Intent

Having gone through Shamanic Death and Rebirth Venus has experienced a powerful Initiation Process. In the Evening Sky, the experience is about Resurrection, Restoration, Integration, and Ascension.



When Sekhmet Awakens As Evening Star she awakens as a Love Goddess and has been Transformed into A Healer

Adding Evening Star Venus

Regardless of the Natal Venus Sign includes these qualities.

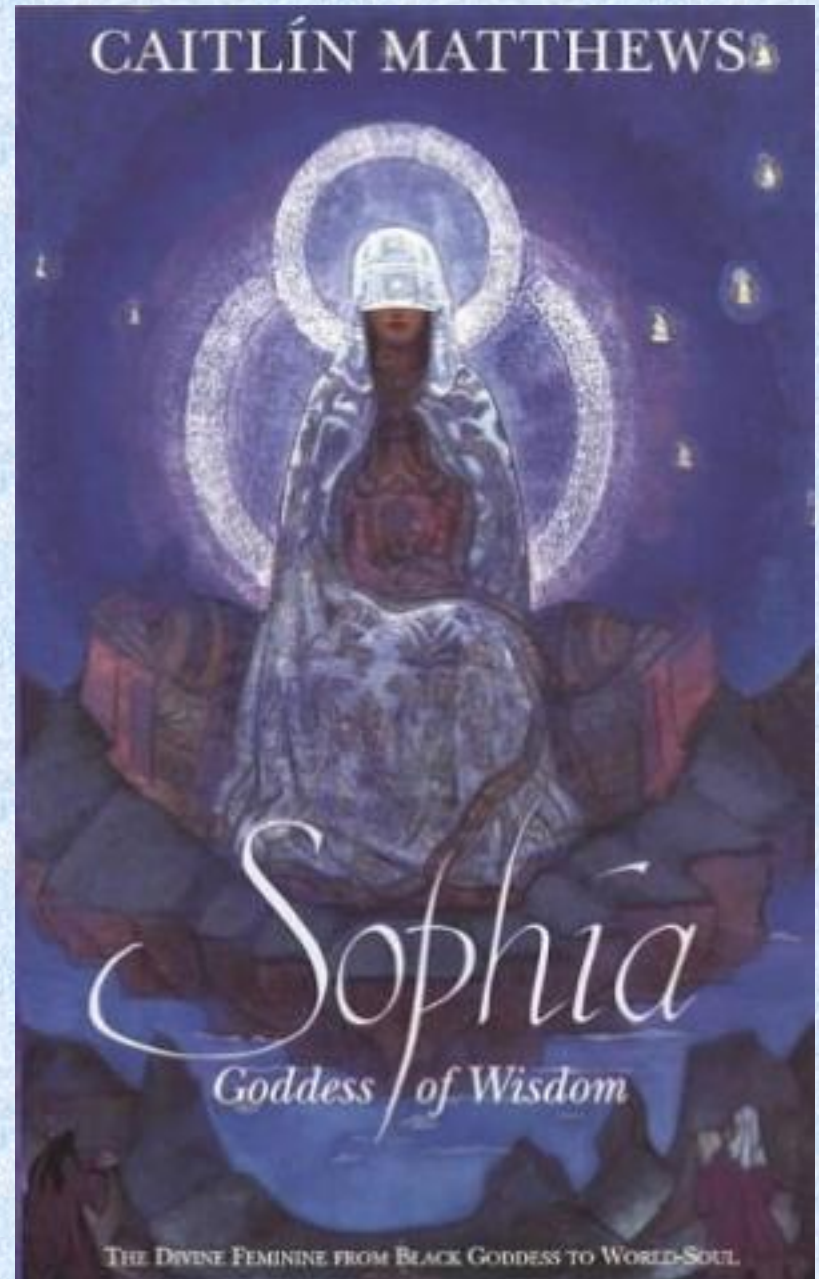
- Being Strategic in your choices
- Considering the Actions You are Choosing
- *Contemplation before Action OR Reflection before Action* meaning you consider the possible Results of taking an action.
- If this reflection comes from fearful hesitation opportunities may be lost. However, when coming from wise consideration mistakes may be avoided.

Evening Star Intent

To Continue developing the qualities of Love, Wisdom and Connection to the Sacred Expressions of Life

To Experience an evolving connection to Love and Beauty that include:

- The natural cycles and seasons of life
- The ability to get the best most practical and useful results when the proper wisdom is applied



Challenges/Shadow of the Evening Star Phase

May Be Slow To Change

May Take Too Long To Act

May Not Act At All

May Miss Opportunities

May Be Too Detail Oriented

May Be Overly Controlling

May Make Unwise Decisions

May Be Out of Sync with Sacred Time



Evening Star Gifts

After at least 3 or more Venus cycles - going through Shamanic Death and Rebirth – you have a deeper understanding and greater confidence in the process of Resurrection, Restoration, Integration, and Ascension accessing these Evening Star gifts more easily:

- Inner Strength and Wisdom that comes from Personal Experience
- Living from the **Priestess, Wise Woman, and Love Goddess** Within
- Being skilled at Wise Use of Intellect and Heart working together
- Greater strength in integrating and operating cooperatively with both your Soul and Spirit, expressing the gifts that come from Knowing and Living Love and Compassion



Evening Star for Men

May be attracted to partners who are wisdom carriers, who are fully initiated and in a position to catalyze their own initiatory journey.

Down side is they may be bossy and controlling when you haven't owned these qualities for yourself.

True intent is to willingly claim your own wisdom gained through life initiations, and to bring this self trust, love and wisdom to bear in your own life.



Questions for Evening Star Phase

- What would it take for me to claim and exercise my wisdom as the initiated Evening Star Goddess?
- How can I more fully express my inner High Priestess?
- What would it take for me to experience greater love and compassion for myself and others?
- What would it take for me to further receive and integrate the gifts of restoration and resurrection?



Venus Always Stations Retrograde In the Evening Sky Around 28 to 29 Degrees From the Sun



- Only 16 days out 584 (.027% of the cycle)
- All the Evening Star Insights and Challenges Apply with additional insights
- Final Integration and Synthesis of the Current Cycle
- Preparing For the Great Giveaway, the Ultimate Surrender, Letting Go and Releasing of the Current Identity
- Getting Ready for a Whole New Incarnation as a Brand New, Youthful, Enthusiastic and Uninitiated Goddess

Venus Retrograde in the Evening Sky

Intent and Process

- All the wisdom, mastery and skill gained in this incarnation will be returned to the Metamorphic Underworld regardless of willingness to surrender it or not.
- If you have Venus in this Phase you are learning how to simultaneously hold a high level of mastery and wisdom while also knowing it is time to release it into the Beyond, where it is returned to Original Source.
- **Additional Challenges/Shadow** may occur around the fear of letting go and attachment to what has been attained.
- Remember to allow Love to guide your way as you never really lose any part of who you truly are.



Venus Retrograde Evening Sky Challenges/Shadow

- Ready or Not ALL the wisdom, mastery and skill gained in this incarnation will be returned to the Metamorphic Underworld
- Feeling insecure and loss of control
- Resistance to Change and Letting Go of what is Known
- Fear of the Unknown
- Attached to external success, accomplishments and achievements as BIG part of identity



Venus Retrograde Evening Sky Gifts

- Learning the value of going within for deeper inner wisdom, accessing insights and understanding that would otherwise not be available
- Learning how to simultaneously hold a high level of mastery and wisdom while also being willing to let it go in an instant
- Learning to Trust what IS - Allowing, Acceptance, and Non-Attachment that supports a heightened perspective and expanded awareness

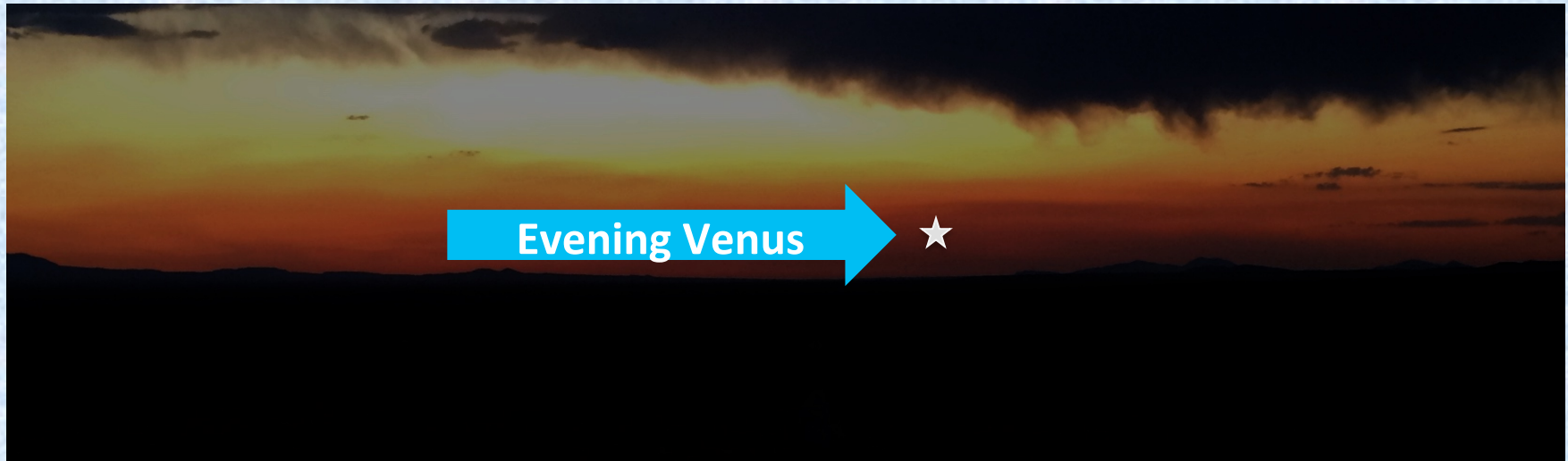


Venus Retrograde Evening Sky Questions



- What would it take for me to focus my attention and intention on my Inner Knowing as a clear and dependable source of wisdom and guidance?
- What would it take from me to Truly Trust My Wise Inner Guidance and to access it daily?

Venus Evening Star Phases



Meta Goddess	Rises as Evening Star	Enters Metamorphic Underworld
Aries	Feb 14, 2010	Oct 22, 2010
Scorpio	Sep 22, 2011	May 30, 2012
Gemini	May 10, 2013	Jan 05, 2014
Capricorn	Dec 04, 2014	August 09, 2015
Leo	July 13, 2016	March 18, 2017
Aries	Feb 19, 2018	October 18, 2018

Cayelin's Evening Star Initiations

July 1978 Aries Cycle Heart Chakra Gate

Got married for the first time

June 1989 Gemini Cycle Solar Plexus Chakra Gate

1st Divorce completed reclaiming 3rd chakra sovereignty and safe space.

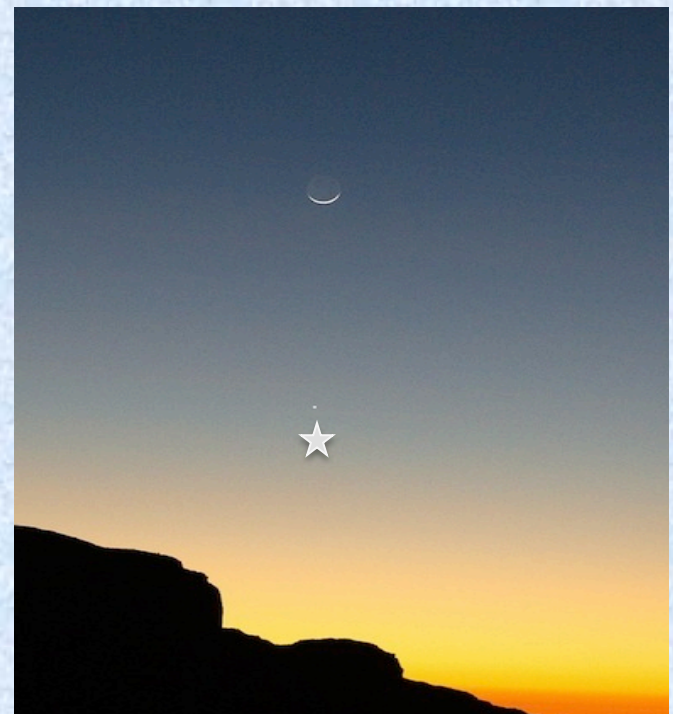
August 2005 Gemini Cycle Moved Out when

2nd Husband asked for divorce gratefully reclaiming once again 3rd chakra sovereignty and safe space.

July 2010 Aries Cycle took Canoe River Trip down Green River in Utah and

committed to losing post-menopause weight gain of almost 20 pounds in about a month - starting a serious health journey at 6th Chakra Gate.

2011 age 56 Venus Return Scorpio Cycle began series of colonics at the 2nd Gate Sacral Chakra and started a series of monthly Liver Flushes (for the next 3 years) at 3rd Gate Solar Plexus Chakra further improving health and well being.



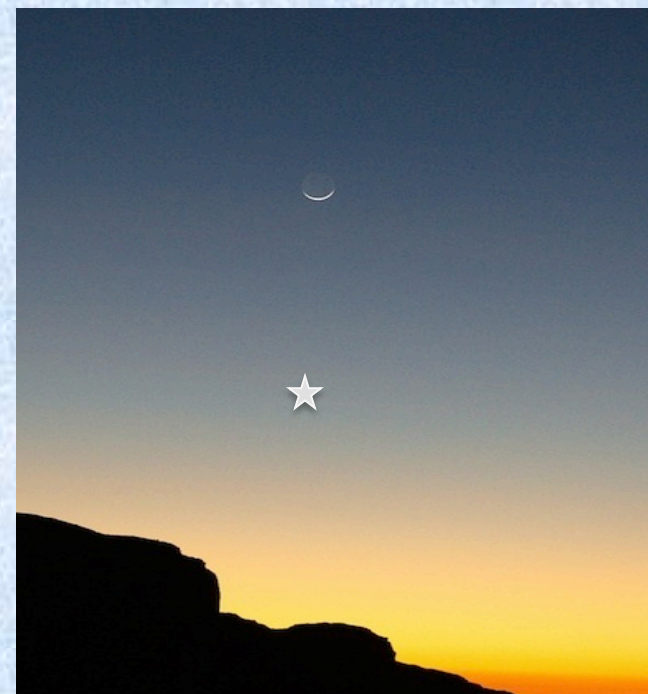
Cayelin's Evening Star Initiations

September 2013 Gemini Cycle at the 4th Chakra Gate Peter's ex-wife died tragically initiating a new phase of our relationship as he began completing his mid-west life.

That completion was finalized in **October 2016 Leo Cycle at the 3rd Chakra Gate**, further Empowering our relationship where we are now living together full time and having even more fun.

January 2017 Leo Cycle bought our new house at the 6th Gate and Moved in at the 7th Gate. This was Peter's Venus Return cycle.

June Solstice 2015 Capricorn Cycle Faywood Hotsprings Venus Alchemy ceremonial event at Crown Chakra with Jupiter. Launched Venus Alchemy website near 8th Gate of Ascension.



Tami's Evening Star Initiations

April 2010 Aries Evening Star: Graduated from SAMS

Scorpio Evening Star 2011 to 2012: Family coming Together to fight Dad's cancer.

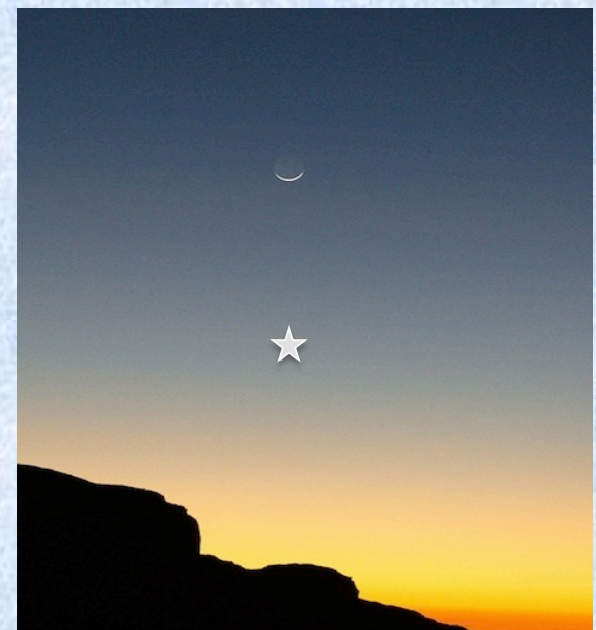
Gemini Evening Star Period 2013: Began Dream Teacher Training with Robert Moss at Solar Plexus Chakra and began Teaching Active Dreaming at Brow Chakra.

Capricorn Evening Star

Heart Chakra April 2015: Move to Mountains with partner to Save Relationship. **Crown Chakra:** Taught first live Venus Course with Cayelin at Faywood Hotsprings.

Leo Evening Star

Heart Chakra: Ended ten year relationship and moved to Missouri

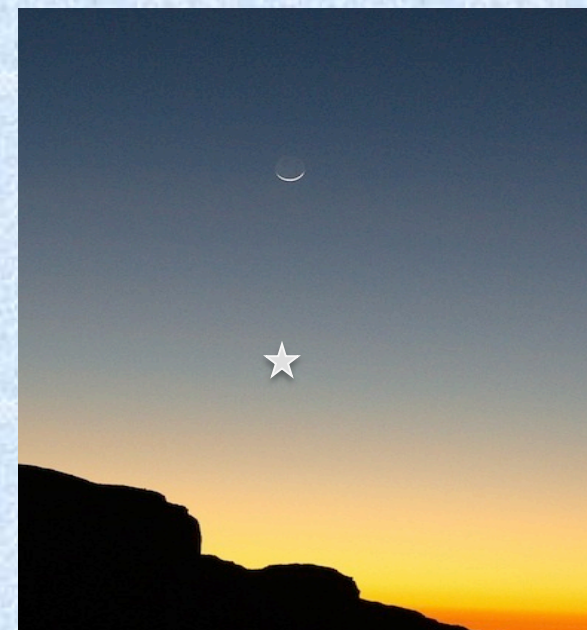


Tami Evening Star Initiations

8 Year Old Evening Star Gemini Venus Return:
Began Homeschooling

24 Year Old Evening Star Gemini Venus Return:
Moved to Mount Rainier to be a Park Ranger
and Idaho to be a Park Ranger/Environmental
Educator. Ended relationship with first love.

32 Year Evening Star Gemini Venus Return:
Took job as Innkeeper at Ecovillage Training Center at The Farm in
Tennessee learning permaculture design, natural building, solar, etc.



Venus Evening Star Phase

Deepening Exercises

Evening Star Venus Life Review

Explore events in your life occurring during the Evening Star Phase – suggestion is to look back at the last 7 Venus Cycles. Do you see repeating patterns? What themes show up?

Exploring Evening Star Questions

Choose one or more questions on one or more of the following that have juice for you.

1. Evening Star
2. Between Phase
3. Retrograde Evening Star

Journal on these questions as a way of deepening your understanding of the Evening Star Phase, as well as to better understand events occurring in your life during the Evening Star Phase.



Additional Resources

If you haven't joined the Venus Star Phases and Meta Goddess Facebook Page use this link and request to be added to the page.

<https://www.facebook.com/groups/168793760550372/>

IF you have questions about how to use Venus Star Phase Table to look up your Venus Star Phases or to discover anyone's Venus Star Phase, Overtone, Chakra Gate (if there is one) etc. let us know and we can cover that in a future class.



[Also Check Out the Venus Evening Star Ceremonial Series](#) beginning March 8 if you haven't already.

[Extra Special New Offering!](#) Including:

The Shamanic Astrology Handbook

The Origins of Shamanic Astrology New Book)

Twelves Tribes Journey (as a digital download)

All for \$70 including shipping - Regularly \$100

