

Venus Alchemy

Evening Star 6th Gate

Perception of the Goddess

with Cayelin K Castell and Tami Brunk



Entering the 6th Chakra Gate



Inanna retrieves her measuring rod and staff or Magic Wand. In the image below you can see Inanna holds a staff or wand in her hand...



Some versions of the story suggest Inanna reclaims her Lapis Lazuli earrings.



Common Sanskrit name for the Brow Chakra is “Ajna” meaning what we perceive.

Considered to be a combination of all the elements in their pure form.

The Ajna Chakra is where we access inner guidance coming from deep within, cutting through illusions to access deeper truths, seeing beyond the mind, beyond words, beyond this reality.

It is about the high witness perspective, connecting with expanded cosmic perception for revelation and insights.



A Balanced 6th Chakra

Skillfully uses imagination and thoughts to co-create reality using insightful and inspiring Intuition, positive visualization, along with access to divinely guided inner vision and the power of dreaming.

Mediation, Visualization

Acceptance of Self and Others
Listening to Inner Guidance
Hanging out with the Night Sky

Essential Oils:

Juniper, Basil, Rosemary, Cedarwood,
Eucalyptus

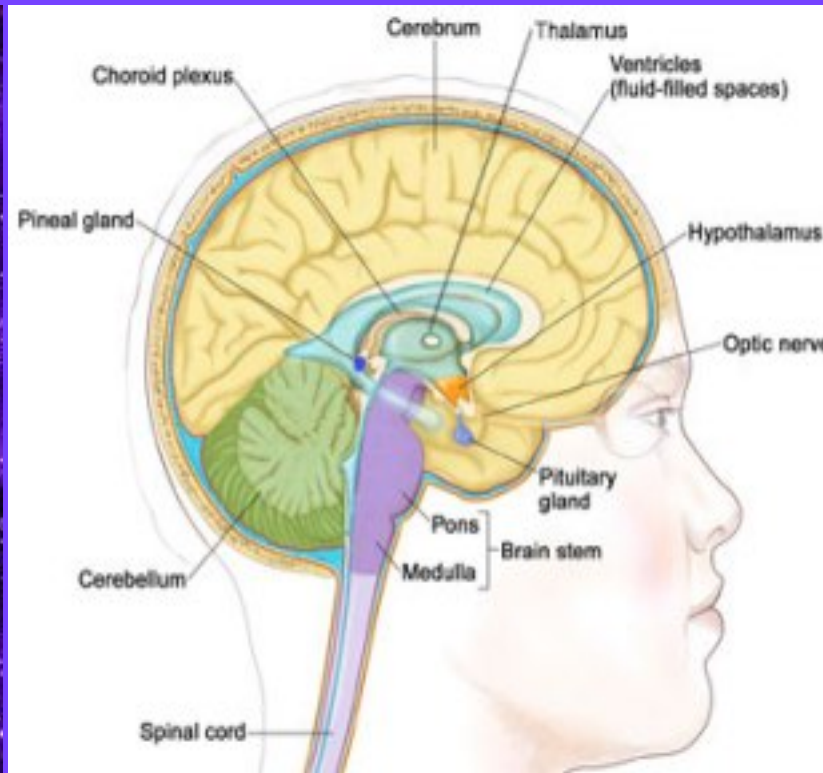
Gems:

Labradorite, Clear Quartz, Lapis Lazuli, Celenite. All Purple stones including: Amethyst, Purple Flourite, Sodalite, Sugulite



6th Gate of Perception or Third Eye Chakra Gate (Ajna) includes reclaiming a healthy Pineal Gland.

This further ignites our ability to see multi-dimensionally from a greater cosmic perspective opening us to more fully experience the inner realms of higher consciousness.



Similarities between the cross section of the brain showing the Pineal Gland and the 'Eye of Ra'.



Ancient Third Eye Imagery

The Eye of Wadjet (a.k.a Horus or Ra) is an ancient Egyptian symbol of protection, royal power and good health.

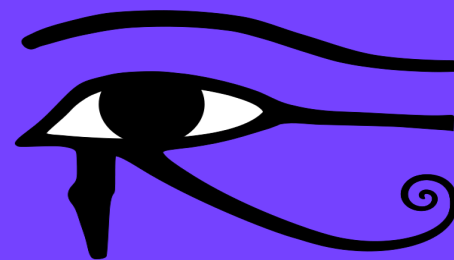
The goddess Wadjet (also written as Wedjat, or “Udjat”, Uadjet, Wedjoyet, Edjo or Uto), refers to “the green one”.

The Greeks and Romans defined *Uraeus* as “risen one” showing the Cobra rising over the third eye symbolizing protection. When threatened the Cobra protects itself by spitting poison into the eyes of its attackers.

Wadjet (Lady of Flame) was one of the earliest Egyptian deities later becoming Bast, Sekhmet, Mut, and Hathor.

The early Egyptians viewed the Milky Way as a Mother Snake Goddess, also called Wadjet. Patriarchy usurped Wadjet, inserting Ra or Horus.

The Eye of the Goddess became the eye of the God.



The Pineal Gland and the Third Eye

- Produces melatonin, a hormone that affects sleep patterns and Dimethyltryptamine (a.k.a. DMT found in our brain and in plant medicine like Ayahuasca) creating the possibility for visionary experiences.
- Regulates seven key hormones including Oxytocin, the feel good, bonding hormone.
- **Contains rods and cones just like our eyes!** The ancients knew this and described the Pineal gland as *the mind's eye*.
- *Is shaped like a pine cone, hence its name. The pine cone is an important symbol used throughout time to represent the pineal gland as our spiritual center.*

The Hindu God Shiva, Buddha and the Tibetan Goddess Kwan Yin among many others - often have a pine cone shaped hair do or knot on their head as a way to honor the pineal gland's powers.



**This Pine Cone is
at the Vatican**

Staff of Osiris
with Pine Cone



Staff of Dionysus
with Pine Cone



Staff of Bacchus with
Pine Cone



Pope with
Pine Cone Staff



Assyrian Deities
(Gods) with Pine
Cones in their
hands



The Largest Pine Cone
Statue in the World is in
Vatican City

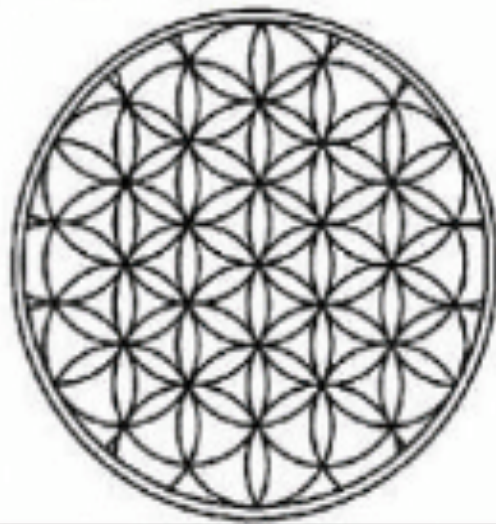
If you have access to Pine Cones where you are
you might want to find one for your altar during this Chakra Gate



Angkor Wat, Cambodia
World's Largest Temple Complex
with Pine Cone Temple
And Goddess Statue with
Pine Cone Knot on her Head



Top of a open Pine Cone



The Flower of Life symbol

The Pine Cone symbolizes Spiritual Enlightenment, Ever Lasting Life or Immortality and Kundalini Life Force Energy awakening Divine Wisdom through Pure Knowledge, Pure Joy, and Pure Love.

Pine Cones spiral in a perfect Fibonacci Sequence equating to the Sacred Geometry in the Flower of Life.

Represents the rising of Kundalini up the Tree of Life (our spine) as depicted in the numerous serpents and snakes rising up around trees or shown with Pine Cones in many ancient cultures around the world.



Benefits of a Healthy Pineal Gland include:

Lucid Dreaming

Greater Awareness

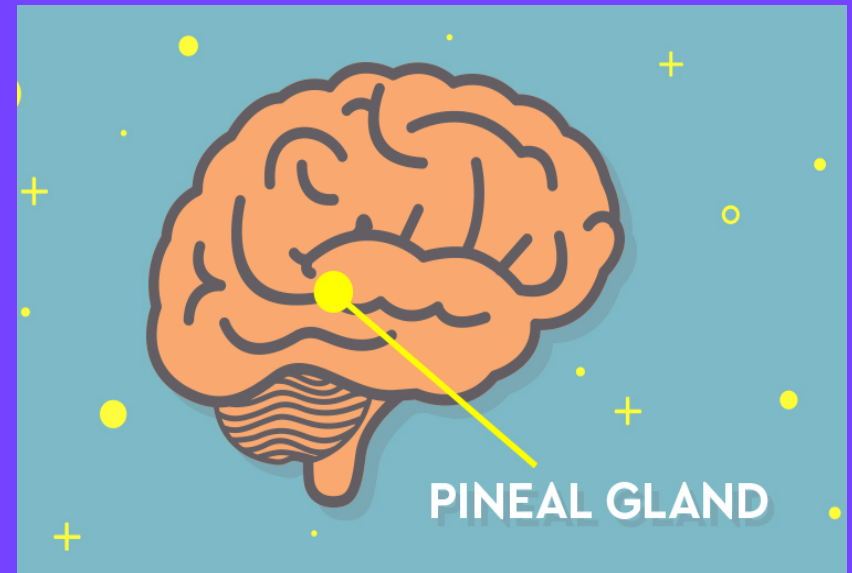
Enlivened Creativity

Psychic/Visual Abilities

Enlightened Perspectives

Magnified Intuitive Power

Heightened Manifestation Powers



Regular Juice or Water Fasting (especially long term - as in weeks instead of days) **decalcifies the Pineal Gland** and activates Melatonin Production. **1 day of dry fasting** (no food or water) has the same effect as three days of Water Fasting. Tune into your body for guidance and/or consult a healthcare practitioner.

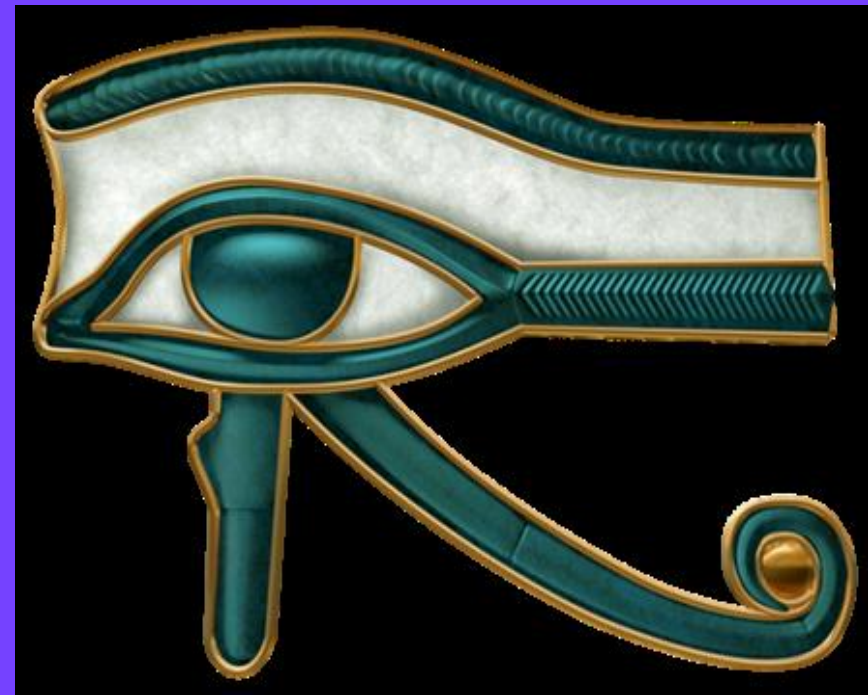
Foods that Restore (decalcify) the Pineal Gland:

A Raw Organic Mainly Vegetarian Diet including: Raw Greens, Garlic, Lemon Water, Cilantro, Celery, Cucumber, Beets, Tumeric, Coconut Oil, Raw Apple Cider Vinegar

Restoring the Pineal Gland

- Eliminate Fluoride in Drinking Water, Toothpaste etc.
- Calcium Supplements tend to calcify all parts of the body, especially the Pineal Gland – Consider taking Ionic Trace Minerals with additional Boron instead
- Consider Nascent Iodine
- Alkalize with Green Super Foods
- Avoid Processed Foods
- Avoid Non-Stick Cookware

- Get Plenty of Rest
- Meditation and Breathing Practices
- Yoga, Tai Chi, Chi Gong
- Exercise to move the Blood
- Sun Gaze
- Spend Time in Nature



Boron is in Avocados, Almonds, Beans, Beets, Chickpeas, Dates, Hazelnuts, Walnuts etc.

Green Super Foods Chlorella, Spirulina, Spinach, Wheat Grass, etc. increases alkalinity, oxygen, repairs and boosts the immune system, heals and decalcifies the Pineal Gland

The Pituitary Gland and Brow Chakra

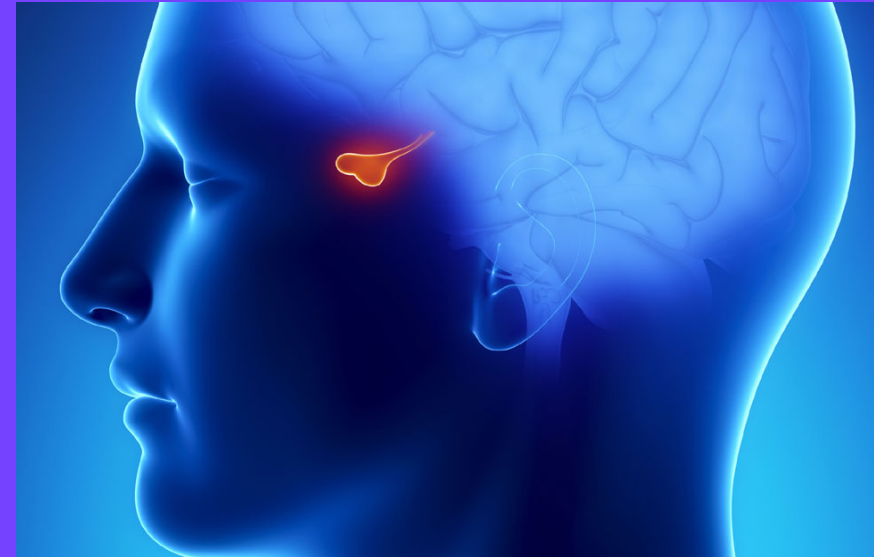
Located just below the Pineal Gland the Pituitary Gland is considered the master gland or control center sending messages and regulating healthy growth of all glands and organs.

The Pituitary Gland regulates creative thinking and creative expression including: poetry, art, music and so on.

It also regulates analytical thought, along with intellectual concepts and is considered the ***seat of illumination, intuition and cosmic consciousness.***

The pituitary is extremely sensitive to diet as is the entire body.

See previous slide for recommendations that will also support a healthy Pituitary Gland.



The Pituitary and Pineal Gland

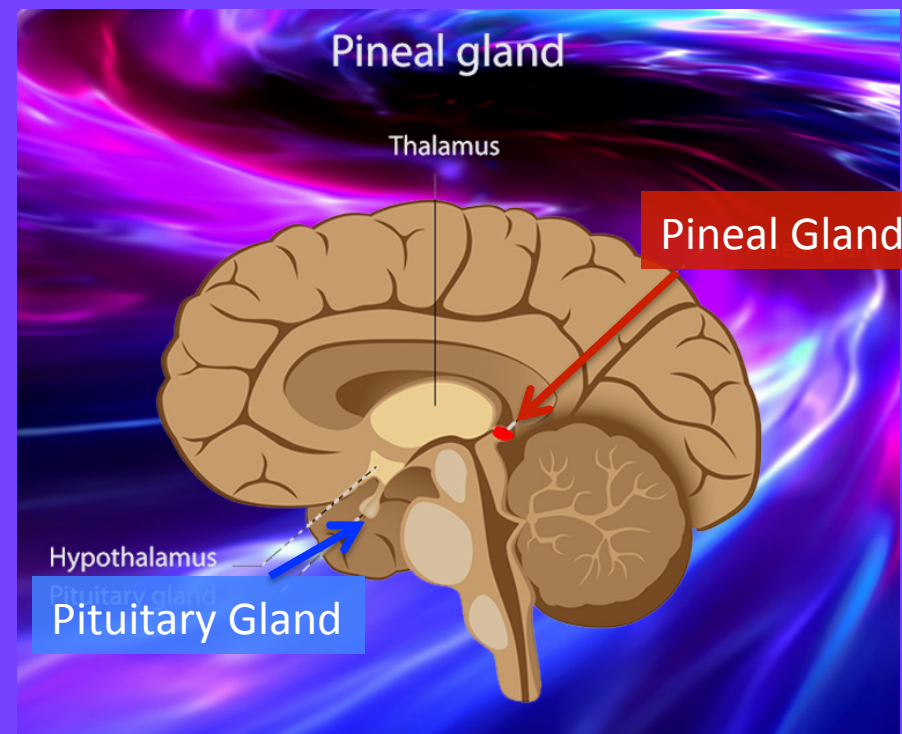
The pineal and pituitary glands

work together activating both intuition and reason. Working together they further activate and open the third eye chakra.

The pituitary gland carries the masculine (+) charge

The pineal gland carries the feminine (-) charge.

A healthy pituitary is needed for a healthy pineal gland. When the pituitary vibrates in synchronicity with the pineal gland, growth and renewal physically and spiritually occurs. When these energies are balanced in the brain Mystical Union or the Mystical Marriage within occurs initiating the birth of multidimensional consciousness providing passage to the fifth dimension and beyond.



Claim Your Clairvoyance

- **Be willing to see your Future.** Is there anything you are afraid of seeing? Witness your fear with love and compassion. Call on your most loving guides to support you.
- **Phrase your question carefully** to receive the clearest vision or insight possible. Begin with questions that have less “charge” as you practice.
- **Focus inner vision on the Third Eye.** If third eye lid is shut, ask it to open for clear vision.
- **Be with any Pictures that Enter Your Mind**
- Ask these Pictures to grow in size so you can see them clearly. Let go of what you don't want and embrace the pictures you do want.
- **Note What you See.** Ask for Interpretation and Clarification to better understand your vision



Before Asking for Intuitive Guidance (Clear the Field)

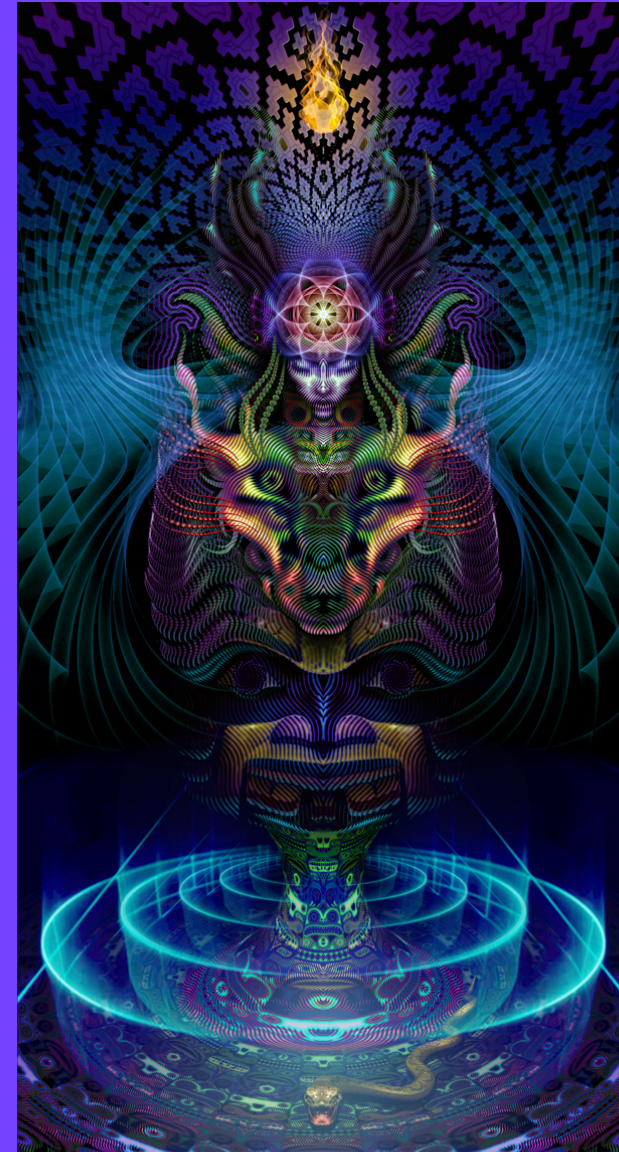
What am I AFRAID the answer will be?

What do I WANT the answer to be?

What do I THINK the answer is?

A Courageous Vision Carrier IS:

- Insightful, Inspired and Inclusive
- Sees what others don't and brilliantly applies their vision for the greater good
- Someone whose Vision benefits and supports all life to Flourish and Thrive
- Someone who knows it is important for us all to feel loved, valued, supported, safe and blessed - developing their vision accordingly
- Compassionate, kind and generous recognizing "we are all in this together"



Creating a Vision Board

Suggestions:

- Create Sacred Space to engage your vision from the Inside Out - not the Outside In
- Ask for Guidance from your Higher Self or the Part of you that Knows
- Play Inspiring Music
- Dance or Move with Your Intention
- Journal Stream of Consciousness fully connecting with your Vision
- Create a Vision Statement with Phrases or Identify Key Words to include in your Vision Board
- Intuitively Search Magazines or Internet for Images connected to your Key Words or Vision Statement
- If you feel stuck or doubtful get up and dance, move, shake to help release those feelings
- AND/OR sleep on it and ask your dreaming self to help
- Once completed Revisit your Vision Board to See if you left anything out or want to change anything.

See examples that follow

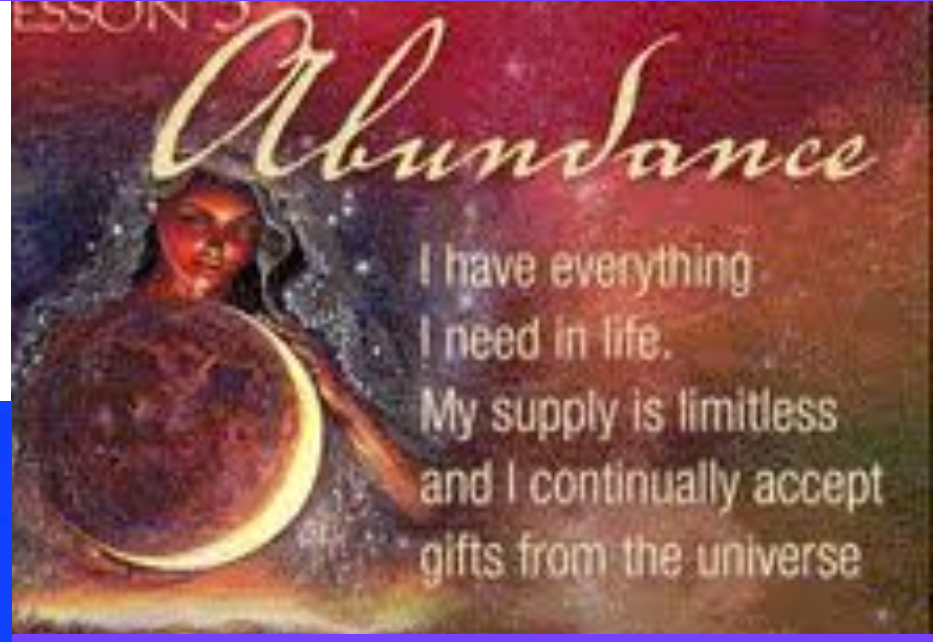




**I Am Deeply Loved And Lovingly Abundant
All My Visions, Dreams And Desires
Are Magically Fulfilled**



I am showered with blessings every day!!!!

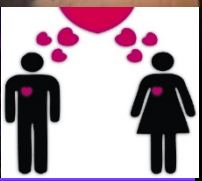
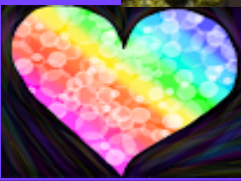




Thank You!

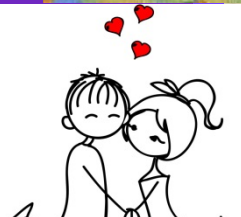


Where is my Home from the Inside Out?



I Cayelin K Castell am Committing to:

- Continuing My Journey for embodied Radiant Health
- Further Expanding my Ability to Love and Be Love
- Increasing My Wealth Vibration in all areas of my life
- Increasing Divine Awareness through Self Awareness
- Practicing Daily Gratitude - Blessing Myself and All Life
- Seeking Guidance around What is Next for Me?



KUNDALINI AWAKENING





3 Beds 2 Full 1,940 Sqft



Vision Board Created in 2014. Fulfilled in stages for the next 3 years. Completed in 2017.

Vision Questing For New Insights

- Set Intention and Sacred Space
- Invoke and Create a Safe, Supportive, Space
- Ideal if you are in Nature: Walking, Hiking, Camping, Quietly communing with the Earth
- Track nighttime dreams and daytime synchronicities
- Determine When, Where, and How Long
- Ask for guidance from your spirit helpers
- Ask for Signs in the World of Form



**Invoking Intentional Magic
through a Ceremonial Walk**

**Perfect House, Perfect Place,
Perfect Time, Perfect Price!**

**Saw this Home Online that
Evening as it went on the market**

Saw the Home 2 days later

5 Offers that Day - Including Ours

Ours Was Accepted

Moved In less than a month later

Casa Milagro (House of Miracles)

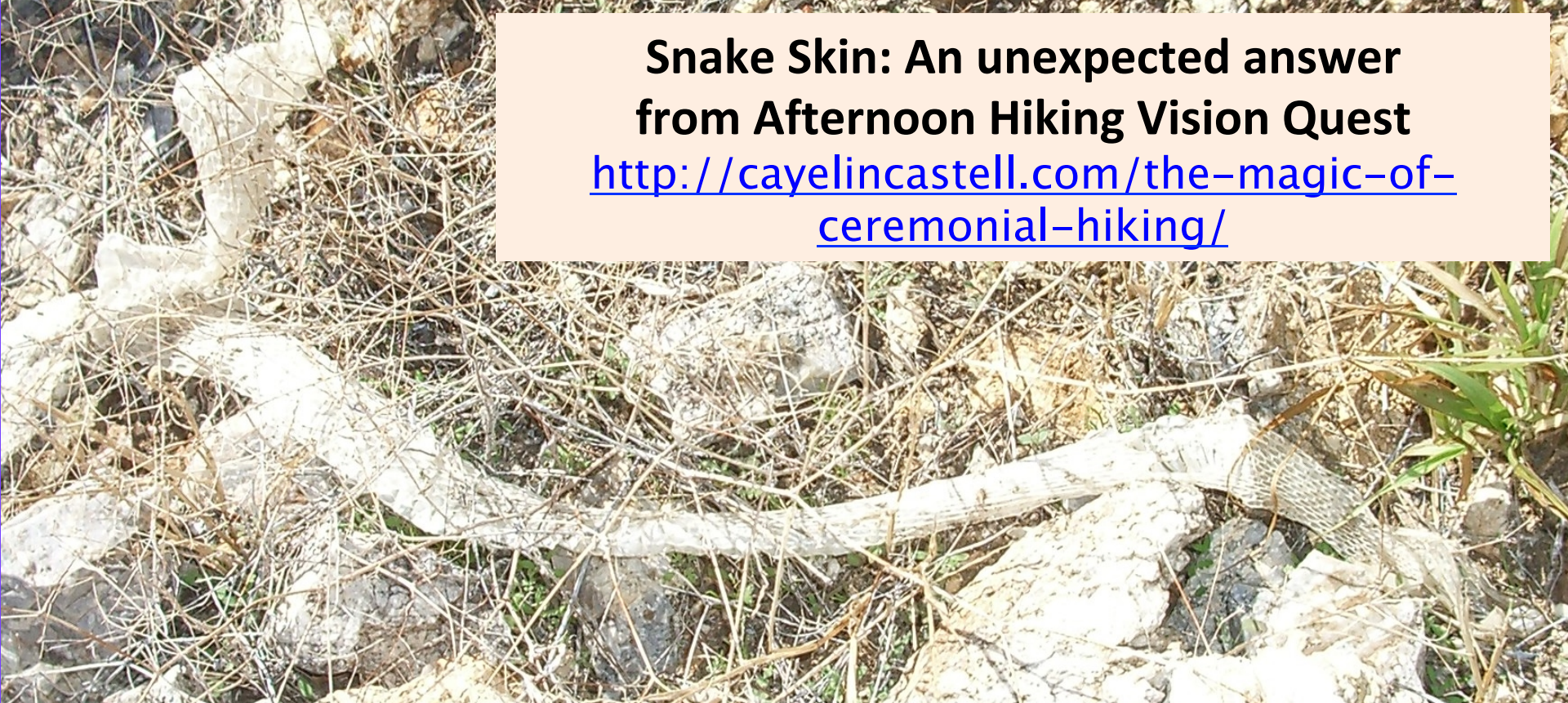


My more general Vision board (slide number 21) had an image of Our Lady of Guadalupe shown here to the far right.

Once we moved into our new home in February of 2017 we unexpectedly and quite magically got this Guadalupe statue now residing by our front door shown here.



**Snake Skin: An unexpected answer
from Afternoon Hiking Vision Quest**
<http://cayelincastell.com/the-magic-of-ceremonial-hiking/>



Same Snake Skin On Altar and Follow Up to the Story
<http://cayelincastell.com/unexpected-magic/>

Who are the 6th Chakra Demons Showing Up for You?

Third Eye Demons

Lack of Faith Demon

Scattered Focus Demon

Limited or NO Vision Demon

Distracted by Illusions Demon

Vision With No Action Demon

Attached to False Idealism Demon

That's Just Your Imagination Demon

You Can't Possibly Achieve That Demon

Name Yours



Home Play Third Eye Chakra

Celebrate Your Visions

Set aside a timed period to journal stream of consciousness, on significant dreams and waking visions that have guided you. **Share these visions with your Venus Buddy**, or someone else in the Venus group you've always wanted to connect with, or a trusted friend or partner.

Create a Dream Vision Board

Create a Vision Board or Collage that reflects what you desire to experience more of in your present and future life. Spend time each day looking at and “feeling” into it. See examples provided

Take a Mini “Vision Quest” using the guidelines already shared on slide 25

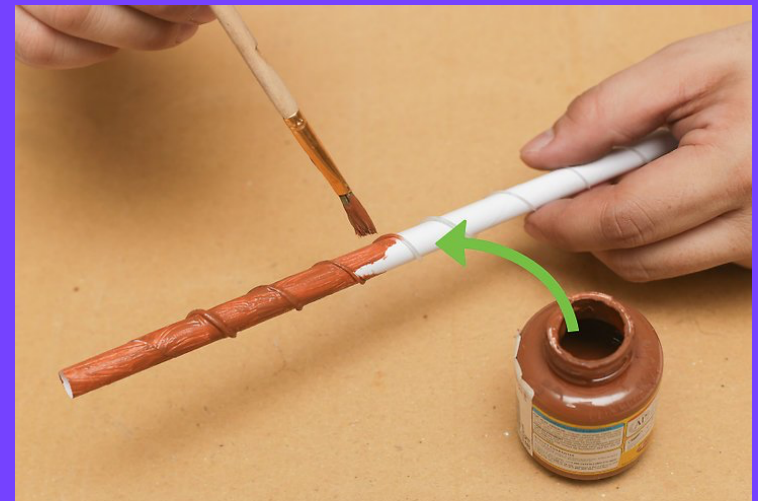


Home Play for Third Eye Chakra

Make Your Own Magic Wand

Create a simple magic wand, or use a crystal that activates the 6th Chakra. Hold this wand or crystal to magnify your intent as you practice visualizing your dreams and intentions for at least 17 seconds each day.

Refer to link in resources for more about making your own wand.



Additional Resources

Wadjet and “The Eye of Ra”

<https://www.ancientegyptonline.co.uk/wadjet.html>

How to Decalcify the Pineal Gland

<https://theartofunity.com/how-to-decalcify-your-pineal-gland/>

Abraham Hicks: 17 Seconds of Visualizing to Manifest

<https://www.youtube.com/watch?v=6WupVjVJuyI>

Visualization Works article <http://expertenough.com/1898/visualization-works>

How to Make Your Own Real Magic Wand

<https://www.wikihow.com/Make-a-Magic-Wand>

How To Create Your Own Vision Board

<http://christinekane.com/how-to-make-a-vision-board/>

Ceremonial Hike <http://cayelincastell.com/the-magic-of-ceremonial-hiking/>

Unexpected Magic and Beyond <https://cayelincastell.com/unexpected-magic/>