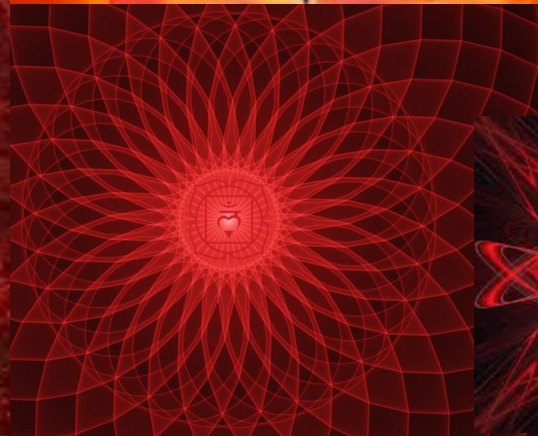
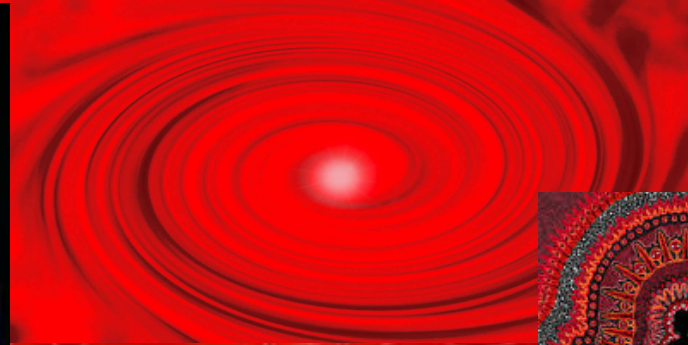


Venus Alchemy Morning Star Libra Journey 7th Gate 1st Chakra

with Cayelin K Castell and Tami Brunk





Relational Goddess Prayer

Invoking Divine Feminine Life Force at the Root Chakra

Beloved Goddess of the Scarlet Garment
Great One of Healing, Lady Of Personal Transformation
Goddess Of Great Vitality, Strength and Life Force Energy
Guide me to Release Everything that Prevents me from
Trusting I am Safe and Secure, I am Loved, I am Supported
I am Accepted, I am Significant, and I am Valued for who I am
And not just what I DO...

Ancient Wise One, Remover of ALL Obstacles and Self Created Barriers
Guide Me to Release whatever is in the Way of Experiencing
Radiant, Vibrant, Alive, Life Force Energy

Guide me in Releasing Everything that Prevents Me
From Creating and Maintaining Healthy Relational Boundaries

Guide Me in discovering all the false beliefs and misconceptions
that block me from knowing my Great Value and Evolving Life Purpose.

Help Me Release ALL Root Chakra imbalances and distortions
including whatever prevents me from Living
the Immense Power, Magic and Wonder Of My Personal Life Force

So I restore the Cosmic Balance within Myself and the rest of the World
It is done it is so and I give thanks! Blessed Be..



Overview

- Sky Magic
- Libra Meta Goddess Moving through Taurus and Gemini at the Root Chakra
- Libra Blocks at the Root Chakra
- Libra Root Chakra Questions
- Home Play
- Venus Temple Journey
- Sky Temple Journey
- Q and A



May 31, 2019
Around 4:45 am

The Ram

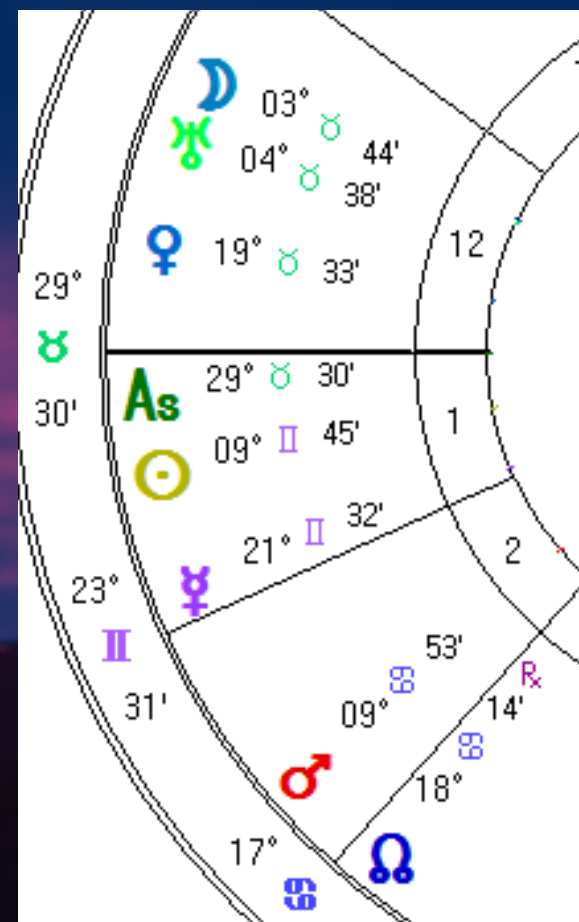
Uranus

The Moon

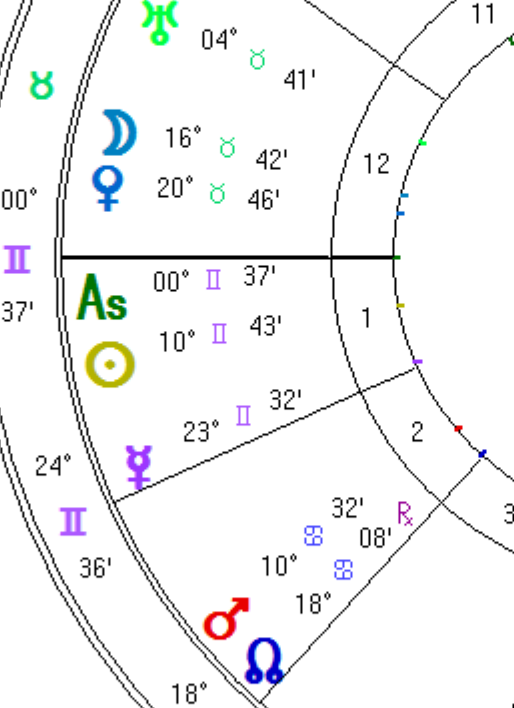
Venus

The Pleiades

Alcyone



June 01, 2019 around 4:45 am



• Venus



Moon

Pleiades

Maia • Electra

• Alcyone

Atlas •

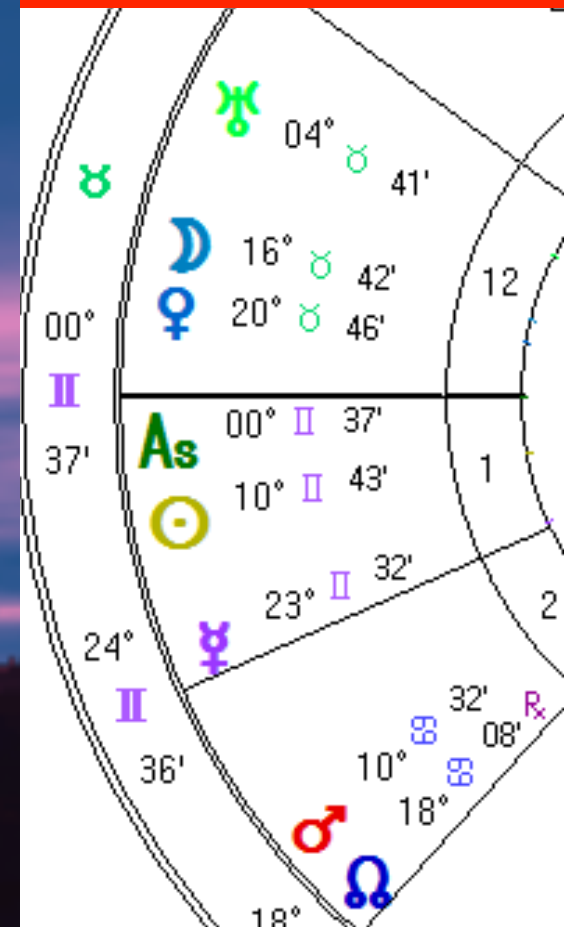


June 2, 2019

Star Map is around
5:15 am as Sun is
rising

Moon may not be
visible

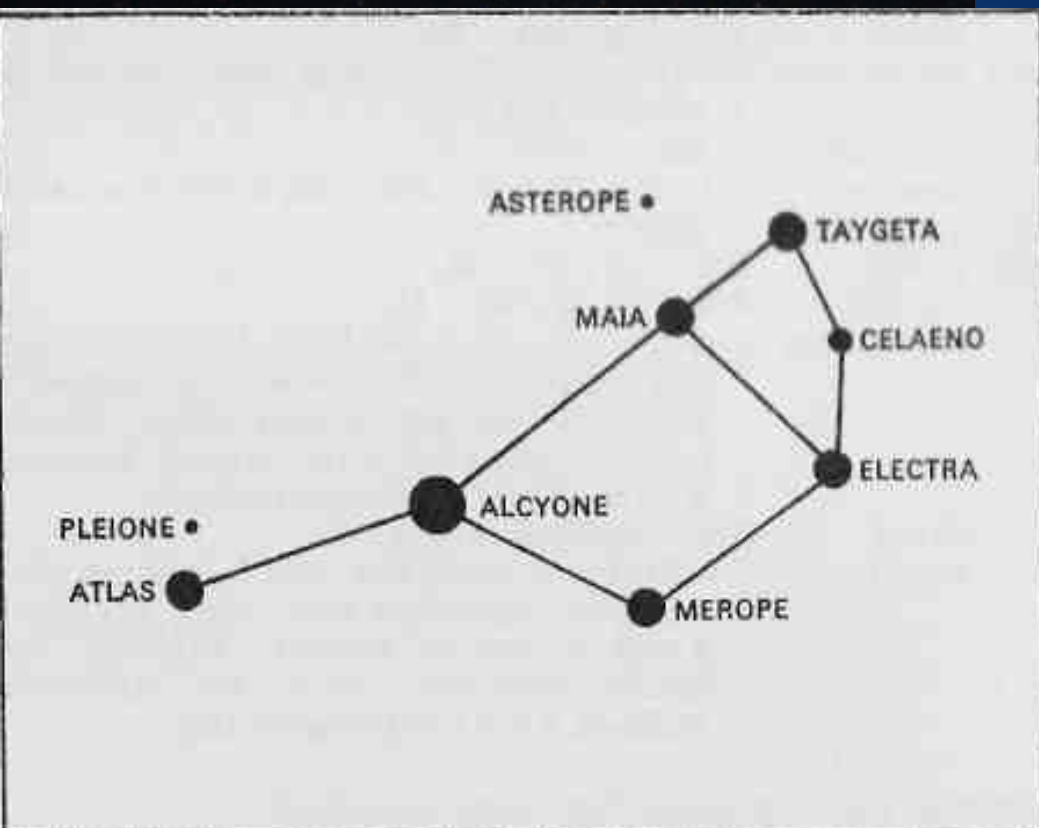
Chart map is 4:45 am





Stars of the Pleiades

Electra
Alcyone
Atlas



• Venus

The Bull

Jun 8, 2019 at 4:50 am

The Pleiades (or seven Sisters) is located in the constellation of the Bull spanning the degrees of 29 Taurus and 0 Gemini

Aldebaran A Royal Star of Ancient Times (eye of the Bull) watcher of the East- in the asterism of the Hyades known by the Greeks as the five Daughter of Atlas and the sisters of the Pleiades.

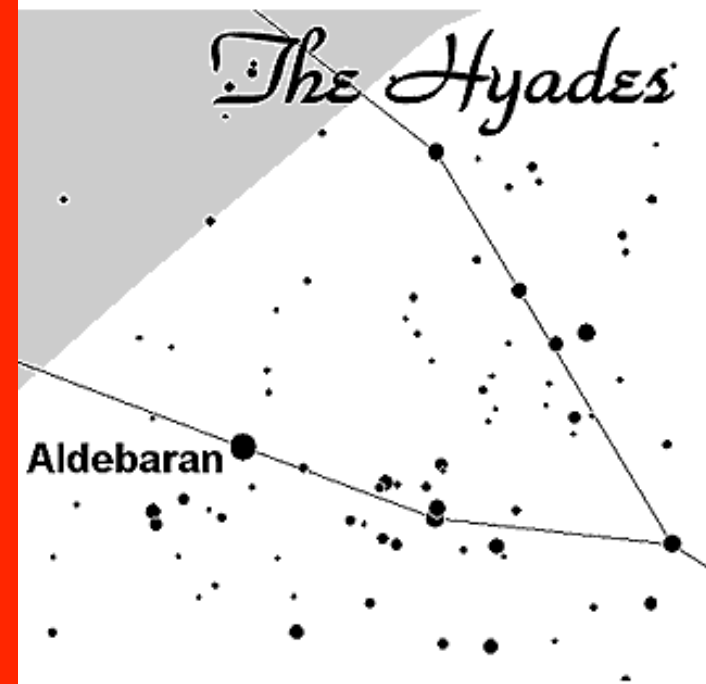
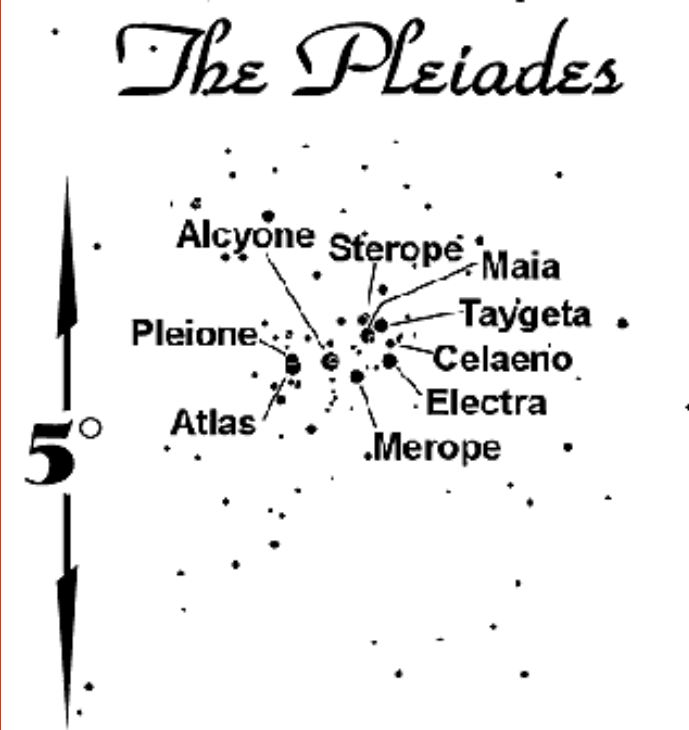
Many indigenous peoples believe they are from the Pleiades And it is their stargate home.

Known as the Seven Sisters in many cultures including many Native American Tribes, Greece, Rome, Siberia and Australia. Other cultures connecting to the Pleiades are the Hawaiians and Mayans etc.

There are descriptions of these stars that date back more than 40,000 years.

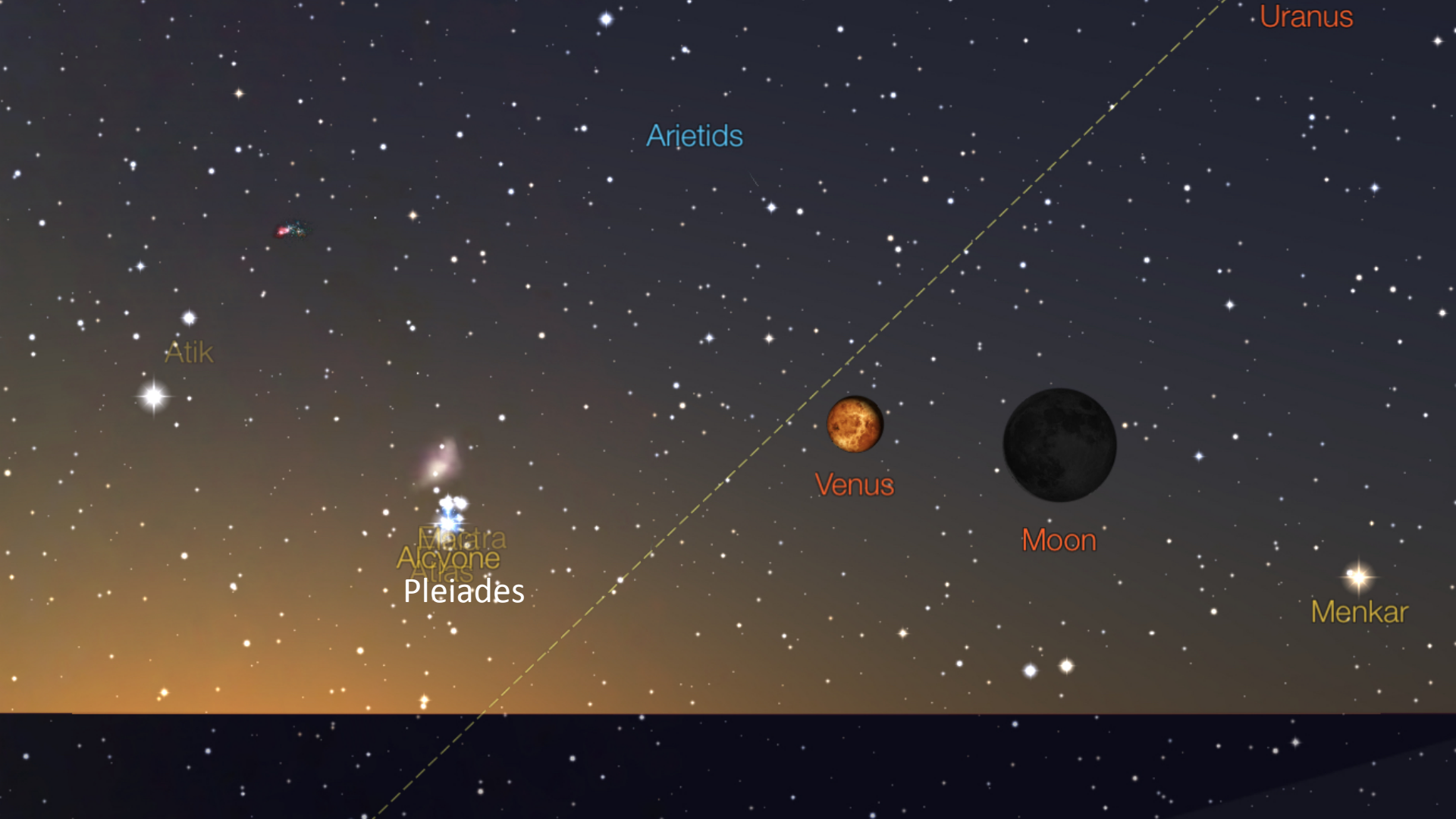
The Pleiades have been described as the cosmic star mother who gave her children the codes of light.

Also Described as the Flock of Doves – it is thought this star system has links to Mary Magdalene and the Merovingian bloodline.



Pleiades Star	Current Degree	Enters Gemini	Month	Day	Year
Alcyone	00 Gemini 16	Entered	Sep	17	2000
Asterope	29 Taurus 59	Enters	May	24	2019
Atlas	00 Gemini37	Entered	Jul	04	1974
Celaeno	29 Taurus 42	Enters	Sep	02	2040
Electra	29 Taurus 40	Enters	Nov	20	2041
Maia	29 Taurus 56	Enters	Oct	16	2022
Pleione	00 Gemini 38	Entered	Aug	10	1972

All the Stars of the Pleiades will be in Gemini by November 20, 2041



June 1, 2019 Moon Venus Near Pleiades

Transits Jun 21 2019

Event Chart

Jun 21 2019, Fri

8:55 am MST +7:00

Tucson, AZ

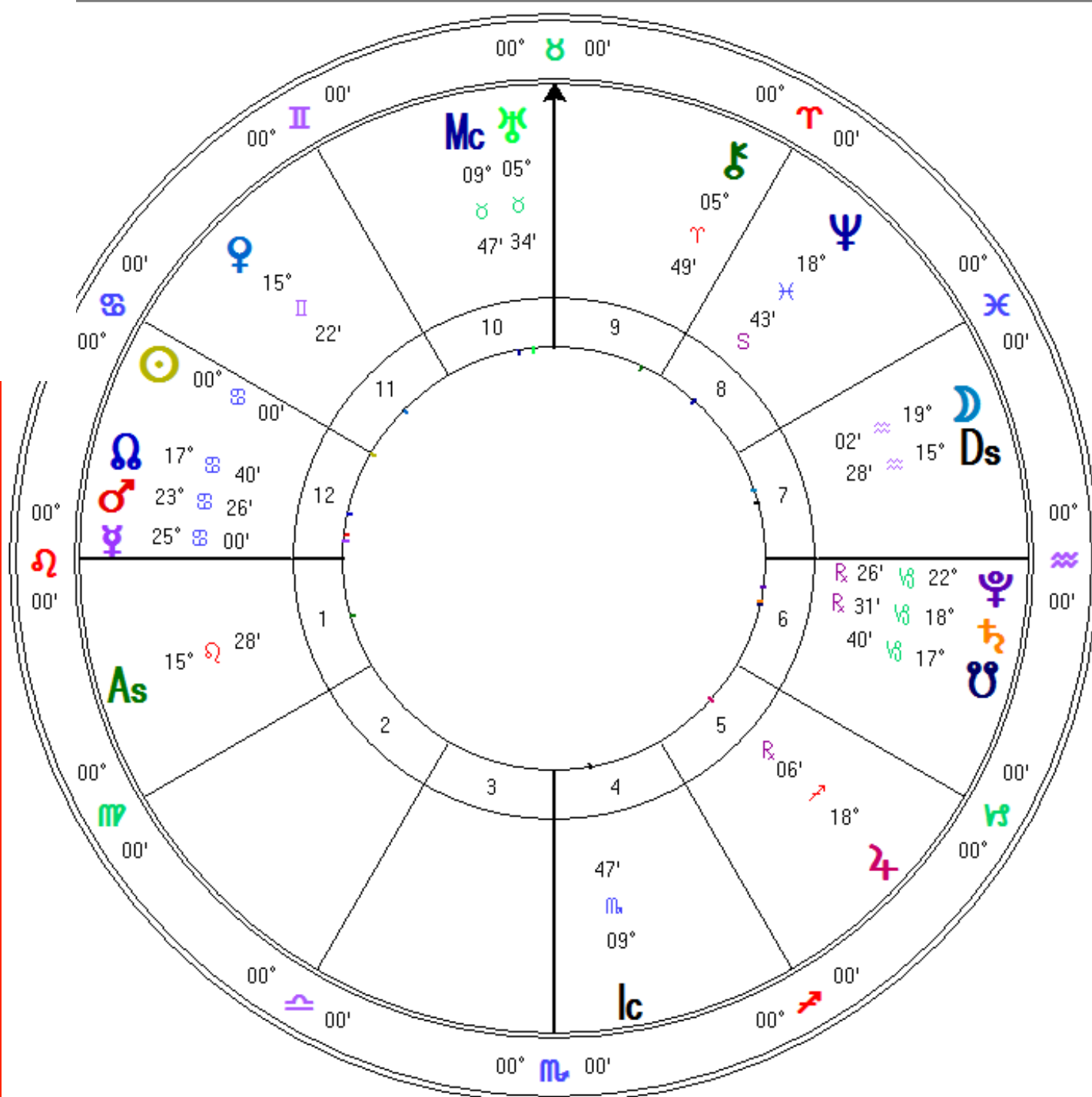
32°N13'18" 110°W55'33"

Geocentric

Tropical

Whole Signs

True Node



**June 01 Next Venus Moon Gate
Root Chakra (21 Taurus)**

**June 07, 08, 09 Venus is with the
Pleiades**

**June 16, 17, 18 Venus is with
Aldebaran**

**June 21 Summer Solstice at 8:54
pm PDT and 11:54 pm EDT**

June 23 Venus opposite Jupiter

June 24 Venus Square Neptune

July 01 Next Venus Moon Gate



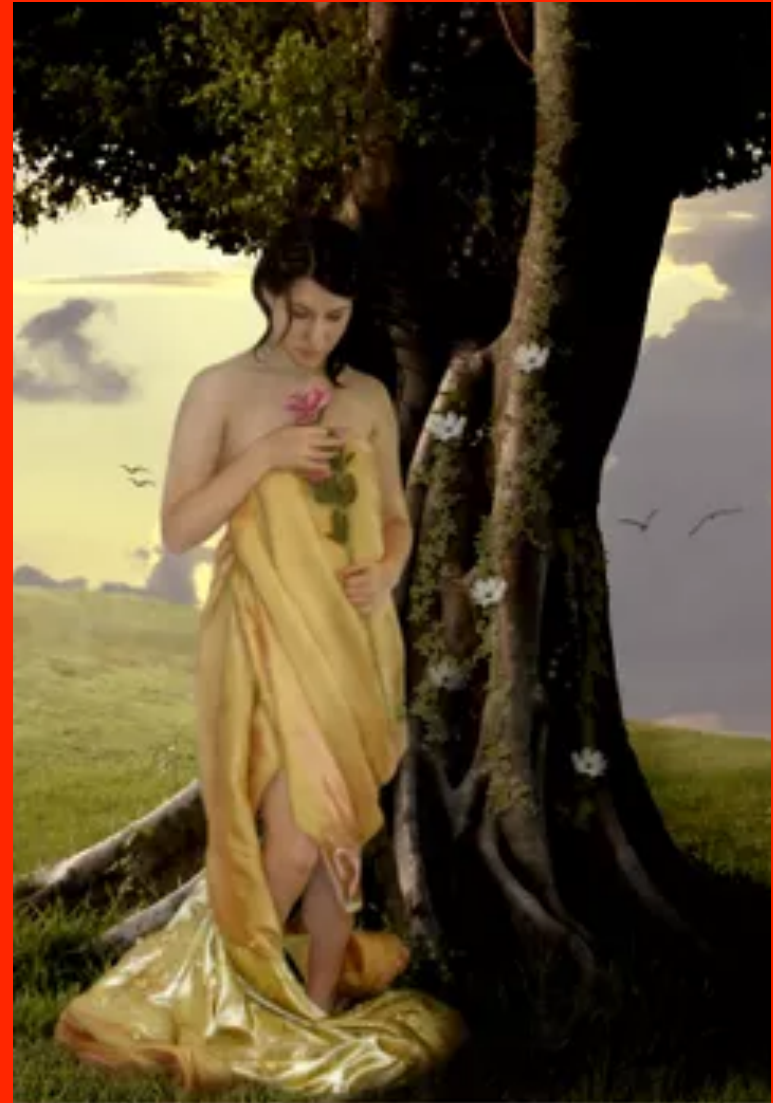
Libra Meta Goddess in Taurus at Root Chakra

Dates: June 1 to 8

In Taurus this Goddess is releasing all that stands in the way of a fully embodied, pleasure-filled sense of belonging on Earth and in community.

We may encounter – so we can release - any feelings of shame associated with our Aphrodite Nature (our natural sensuality and sexuality) due to judgment from the culture we were raised in.

We now claim our right to be honored and respected in our communities and our relationships as both passionate lovers and cherished partners.



Libra Meta Goddess in Gemini Root Chakra June 8 to July 1



This is about clearing any and all blocks around allowing our joyful inner child to enjoy spontaneous fun and play with her tribe of magic-makers and her beloved.

She is releasing any and all inhibitions around showing up in relationship as her most authentic, joyful, mischievous, wild and free Self, finding her people and having FUN!!!!

Cassandra Brene Brown is a research professor at the University of Houston where she has been researching courage, vulnerability, shame, and empathy.

She is the author of five
#1 New York Times Selling Books:

The Gifts of Imperfection

Daring Greatly

Rising Strong

Braving the Wilderness

Dare to Lead

Her TED talk – The Power of Vulnerability – has over 35 million views and she is the first person to have a filmed talk available on Netflix that debut on April 19, 2019 titled *The Call to Courage*.



Brene Brown is either
a Libra Moon
Or Virgo Moon

Libra Insights on Being Vulnerable and Belonging Versus Fitting In from Brene Brown

Vulnerability and Trust are the keys to wholehearted living and belonging.

Start with either or both as they build on one another.

Vulnerability is uncertainty, risk and emotional exposure. It is not about winning or losing but having the courage to show up when you can't control the outcome.

Researchers measure how brave you are by how vulnerable you are willing to be.

Don't take criticism from people who are NOT being brave with their lives.

The opposite of belonging is fitting in.



Brene Brown
Venus in Capricorn
Gemini MetaGoddess
Evening Star 6th Chakra

Libra Insights Fitting in Versus Belonging

from Brene Brown

Fitting in is assessing and acclimating to fit in - what to wear, how to appear, what to say, conforming in some way.

Fitting in is perhaps needed in some contexts, school, work, certain social situations etc. unless we are saying things (like gossiping) that are untrue for us creating the possibility of feeling guilt.

Fitting in is the greatest Barrier to Belonging.

True belonging doesn't require you to change who you are - it requires you to be who you are - both vulnerable and brave.

What Interests You? Hang out with people who share your interests.

What Brings You Joy? Find time to do those things.



Brene Brown

Libra Insights Fitting in Versus Belonging

from Brene Brown

Make a list of all the things you do to fit in that feel bad, unfulfilling, less than who you really are.

Who would you look like, sound like, be like if you weren't fitting in?

What action could you take to let at least one of these fitting in things go or change it somehow?

How would your life be? What would your days look like? Who would you be spending time with?

Choose to live life defined by YOU and your expectations – not trying to fit into others expectations.

Be sure to notice the impact of your actions and words. Are they helping you to feel more connected to others?

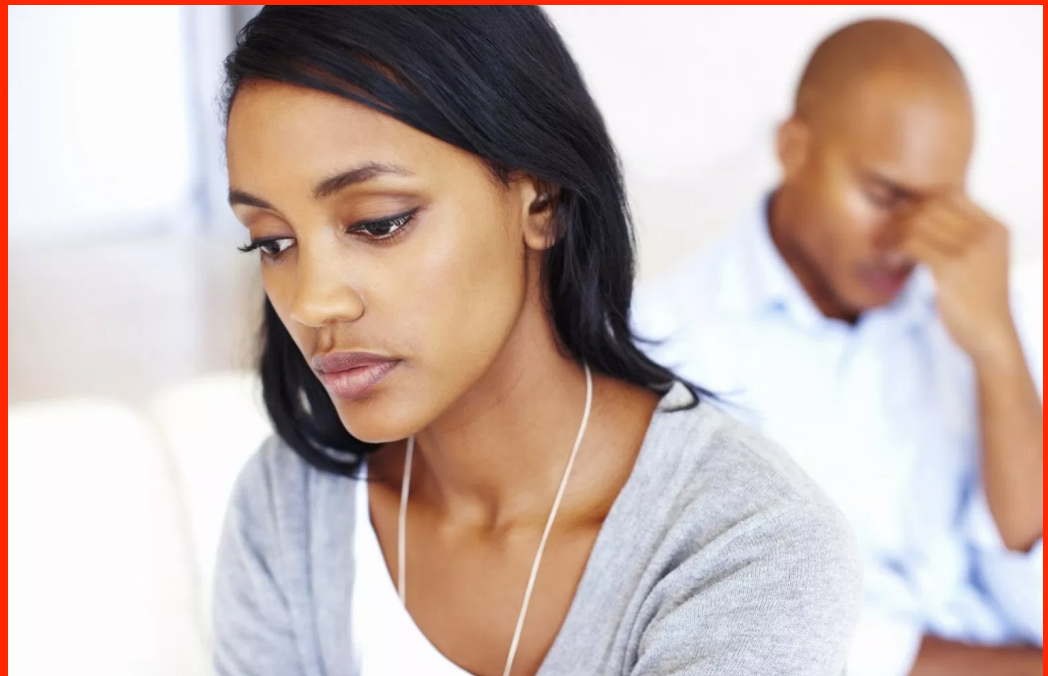
Start small and practice belonging to yourself first by being your true self whenever you can. Work your way up to being more of your magnificent self?



**Practicing Belonging
is Courageous Living**

Libra Blocks Around The Root Chakra

- Desire to Fit in/Belong is So Strong It Causes Self Abandonment
- Going into Survival/Fight Flight Mode in Times of Relationship Conflict
- Adrenal exhaustion or burnout due to over giving in relationships without sufficient return.
- Lack of boundaries and taking on the other's "stuff" and then isolating.



Questions for Libra at the Root Chakra

What would it take for me to release all imbalances in my relational life

Including:

- Giving my all to any relationship without an equitable return
- Being co-dependent
- Giving up who I am to be in relationship
- Settling for relationships where we do not meet each other in the ways we need to met, loved or valued

Where am I addicted to relationship or so shut down I am not allowing relationship into my life?



Home Play for Libra at the Root Chakra

Boundaries Assessment

Day 1: Over the course of your day, pay attention to your instinctual, energetic response to other people - strangers as well as loved ones.

Now pay attention to your outer physical verbal response to them. Is there a match? How often do you practice “lying” with your words or actions, behaving as if you WANT another’s energy in your field when you are not in fact available?

Day 2: Same game only this time make one of two choices: either you match your actions with your energetic (with love) OR you CHOOSE to connect, by first acknowledging your honest inner reaction and deciding to make a shift into conscious connection.

What would it take to set boundaries from a place of emotional honesty and love for self as well as the other?

Boundaries are
the distance at which
I can love you and me
simultaneously.

—
PRENTIS HEMPHILL